

- TUSK Bull Rack bike storage
- TUSK Hook 'n' Hang vertical bike storage
- TUSK Excel high security anchors
- TUSK Modular bike storage systems
- TUSK Multihanger overhead storage

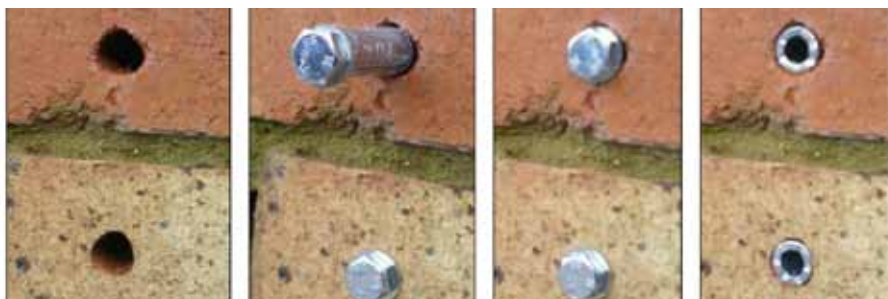
### Product Information Sheet

#### SHIELD ANCHOR INSTALLATION

Bull Rack - Hook 'n' Hang - Excel

Detail  
Sheet

13A



### Installation:

1. Locate at suitable height in sound masonry; mark hole centres, drill a 14mm x 55mm deep hole at each location and clean out holes.

**Caution: Wear suitable eye protection when drilling holes.**

2. Finger tighten bolts into shield anchors prior to inserting into the wall.

3. Tap flush with wall face, give 2-3 turns of bolts to expand the anchor.

4. Remove bolts.

5. Attach Bull Rack as shown with 2 x M8 x 60mm bolts with a washer under each bolt head and fully tighten. Recommended torque is 25Nm.

6. Check Bull Rack is level using a spirit level. Add plastic bolt head covers.

7. Rack bike horizontally as shown by top tube, or vertically by seat tube.

### Security:

Lock bike to Bull Rack using a quality security cable through both locking loops, through both wheels and figure of eight around the frame as shown. For maximum security also consider fitting an Excel Hardened Steel Security Anchor 20cm below the Bull Rack.

**Note: Follow stages 1-4 for all M8 shield anchor installations.**

These instructions are for guidance only - see our website for full terms and conditions

[www.tuskstore.com](http://www.tuskstore.com)